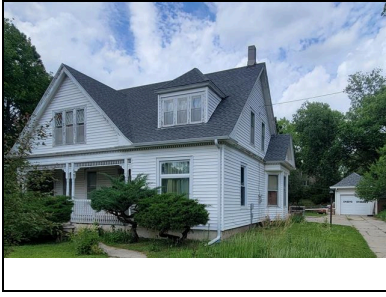


**LISTING DETAIL**

Type **SINGLE FAMILY**  
 Address **1202 Kingwood Street**  
 City **Stanton**  
 State **NE**  
 Zip **68779**  
 Area **STANTON**

**Penny Korth**  
**Real Estate Solutions Team**  
**Cell: 402-640-4000**  
**1002 Ivy St.**  
**Stanton NE 68779**  
**penny@keytosolutions.com**

Listing Office: Real Estate Solutions Team

**GENERAL**

Bedrooms	<b>4</b>	Lot Size	<b>16800</b>	Baths: Upper	<b>.5</b>
Total Bath	<b>2</b>	Zoning		Baths: Main	<b>1</b>
Garage Capacity	<b>1</b>	Elementary School		Baths: Lower	<b>0</b>
Garage Type	<b>Detached</b>	Jr. High School		Baths: Basement	<b>0</b>
Style	<b>2</b>	Senior High School		Bedroom: Upper	<b>3</b>
Sq. Ft. Above Ground	<b>2500+</b>	Living Room: Size	<b>15X13</b>	Bedroom: Main	<b>1</b>
Approx. Age	<b>61+</b>	Dining Room: Size	<b>16X15</b>	Bedroom: Lower	<b>0</b>
Basement	<b>Yes</b>	Family Room: Size		Bedroom: Basement	<b>0</b>
Waterfront	<b>None</b>	Kitchen: Size	<b>20X13</b>	Apprx. Sq. Ft: Upper	<b>1100</b>
		Primary Bdrm: Size	<b>15X13</b>	Apprx. Sq. Ft: Main	<b>1600</b>
		Bedroom 2: Size	<b>16X13</b>	Apprx. Sq. Ft: Grdn Lvl	<b>0</b>
Legal	<b>LOTS 9 &amp; 10, BLK 2, HOLMAN &amp; GRAVE ADD CITY OF STANTON</b>	Bedroom 3: Size	<b>14X10</b>	Apprx. Sq. Ft: Basement	<b>0</b>
		Bedroom 4: Size	<b>24X13</b>	Apprx. Sq Ft Finished: Basement	<b>0</b>
		Bedroom 5: Size		Apprx. Sq. Ft. Abv Ground	<b>2700</b>
		Other Rm Size 1	<b>FOYER 16X12 MAIN</b>		

**FEATURES**

Living Room	<b>Wood</b>	Window Covering	<b>All</b>	Possession	<b>At Closing</b>
Dining Room	<b>Wood</b>	Construction	<b>Frame</b>	Utilities	<b>City Water, City Sewer, Natural Gas, Electricity, Cable Tv, Telephone</b>
Kitchen	<b>Electric Range, Refrigerator, Pantry, Wood</b>	Water Heater	<b>Gas, 40 Gal+</b>	Street	<b>Paved, City Maintained</b>
Laundry	<b>Main, Electric, Washer, Dryer</b>	Heating/Cooling	<b>Gas Forced Air, Central Air</b>	/Road	
		Roof	<b>Asphalt</b>	Exterior	<b>Vinyl Siding, Storage Shed,</b>
				Featur	<b>Covered Patio, Gutters</b>

**FINANCIAL**

Assumable		HOA Dues	
Accelerate		Flood Zone	<b>No</b>
Qualify		Parcel #	<b>200.00</b>
Equity Amount		Tax Year	
Assumption Payment Amount		Financing Remarks	
Taxes	<b>HOMESTEAD</b>	Tax ID	

**REMARKS**

Remarks **If space is what you're needing most, you'll have more than you know what to do with in this 2600 sq ft home on a double lot and at a price you can't beat! Located in Stanton, NE, just 13 minutes from Norfolk. This home features 4 bedrooms, full bath on the main floor, and half bath on the upper floor. The private backyard gives you the no-neighbors feel you've been dreaming of. If you love to can food or always wanted a wine cellar, this home has two arch brick ceiling cellars so you can have one of each! This home is a perfect blend of charm and functionality, ready to welcome its new owners.**

This information is deemed reliable, but not guaranteed.